

Give Me Faith

Words by
Chris Brown, Mack Brock,
Wade Joye and London Gatch

Outline:
V1, PreCh, Ch1, V2, PreCh, Ch2, Br(2x), Fch

Music by
Chris Brown

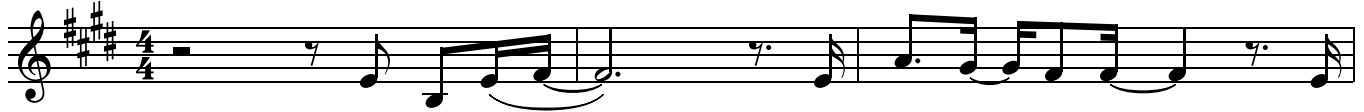
♩ = 72

VERSE 1

E

B

C#m



1. I need You _____ to soft - en _ my heart _ and

4

A

E

B



break me _ a - part. _ I need _____ You _____ to o - pen _ my eyes, _ to

⌘

PRE-CHORUS

7

C#m

A

E/G#

A

B



see _ that _ You're shap - ing _ my _____ life. All I am,

CHORUS

11

E/G#

A

B

A

E



I sur - ren - der. Give me _ faith _____ to

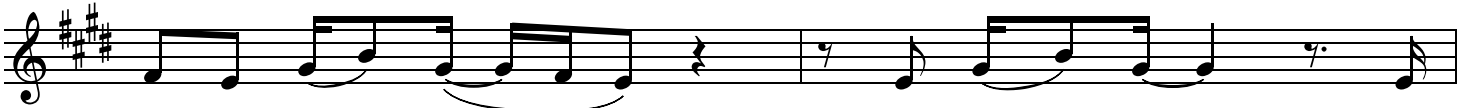
14

B

C#m

A

E



trust what You _ say, _____ that You're _ good _ and

2nd time to Coda ⊕

16

C#m

B

F#m

A



Your _ love _ is great. _____ I'm bro - ken in - side, .

VERSE 2

18 E B A B E

I give _ You my _ life. 2. I need You _

22 B C#m A

_ to soft - en _ my heart _ and break me _ a - part. _ I need _

25 E B

_ You _ to pierce through _ the dark, _ and

27 C#m A

cleanse ev - 'ry part _ of me. _

D.S. al Coda

⊕ Coda

INSTRUMENTAL

29 E B A E B C#m A E

_ I give _ You my _ life. _

BRIDGE

33 C#m B A E B C#m

'Cause I may be weak, but Your Spir - it's strong in me. _

36 A E C#m B A

My flesh may fail. My God You nev - er will.